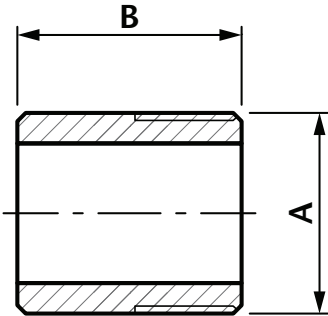


WN

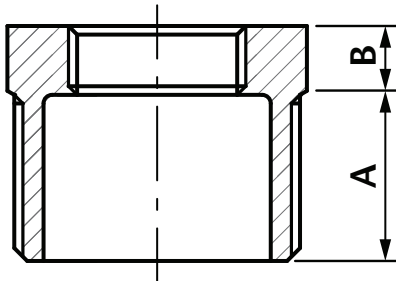
Weld Nipple



DN	A	B	Kgs
1/8"	10.2	30	0.010
1/4"	13.5	30	0.016
3/8"	17.2	30	0.020
1/2"	21.3	35	0.037
3/4"	26.9	40	0.057
1"	33.7	40	0.085
1 1/4"	42.4	50	0.118
1 1/2"	48.3	50	0.164
2"	60.3	50	0.0216
2 1/2"	76.1	60	0.422
3"	88.9	70	0.640
4"	114.3	80	1.033

RB

Hexagon Reducing Bush



DN	A	B	Kgs
1/4" x 1/8"	12	6.5	0.013
3/8" x 1/4"	14	6.5	0.021
1/2" x 1/4"	16.5	7.5	0.035
1/2" x 3/8"	17	7	0.031
3/4" x 1/4"	18	8	0.065 NEW
3/4" x 3/8"	18	8	0.055 NEW
3/4" x 1/2"	18	8	0.048
1" x 1/2"	19	8	0.081
1" x 3/4"	19	8	0.067
1 1/4" x 1/2"	20.5	9	0.143
1 1/4" x 3/4"	20.5	9	0.141
1 1/4" x 1"	20.5	9	0.114
1 1/2" x 1/2"	22	9	0.200 NEW
1 1/2" x 3/4"	22	9	0.197
1 1/2" x 1"	22	9	0.176
1 1/2" x 1 1/4"	22	9	0.121
2" x 1"	26	9	0.328
2" x 1 1/4"	26	9	0.269
2" x 1 1/2"	26	9	0.228
2 1/2" x 2"	27	8	0.445
3" x 2"	33	11	0.795
3" x 2 1/2"	33	11	0.589
4" x 2"	36	12	1.492
4" x 3"	36	12	1.203

Dimensions in mm

This data sheet is designed as a guide and should not be regarded as wholly accurate in every detail. We reserve the right to amend the specification of any product without notice.